

|| D 19 D S 21 ||
WAGON

CITROËN 

D-SERIES

yet the same essential qualities remain common to all. They have the same magnetic appeal - in every sense of the word ; the same sculptured beauty of a perfect aerodynamic shape, the same excitement of speeds of 100-115 m.p.h. Their safety design is exemplary, their road holding impeccable, and the comfort they offer is renowned throughout the world. They have the same formula for their success: front wheel drive, hydro-pneumatic suspension and power-operated disc brakes. The principle of front wheel drive is to concentrate the weight of all the mechanical units on the front wheels which both drive and steer the car. This, combined with Michelin XH radial ply tyres which are standard throughout the range, results in greater adhesion and, because the vehicle's centre of gravity is moved forward, the rear axle naturally follows the heavier front one when cornering. Front wheel drive, the principle employed by Citroen since 1934 and becoming more widely adopted by other leading manufacturers each year, means greater stability and higher cornering power.

Hydro-pneumatic suspension is the only suspension medium which combines perfect road holding with extreme comfort. Traditional metal springs are replaced with air cushions. Each of the four independantly sprung wheel is linked to a suspension sphere in which a variable flow of liquid, which is incompressible, is used to compress a volume of gas. Automatic height correctors ensure a constant ground clearance irrespective of the load being carried, and an additional manual control enables the car to be raised from 3 1/2" to 11" from the ground (for rough or flooded roads, and even changing a wheel).

The twin-circuit braking system is full power-operated. A brake effort distributor balances the braking effort between the front disc and the rear drum brakes according to the load on the rear suspension.

The front disc brakes are inboard mounted and have special cooling ducts. On the DS 21 models and the Wagon 21, excessive brake pad wear is signaled by a dashboard warning light.

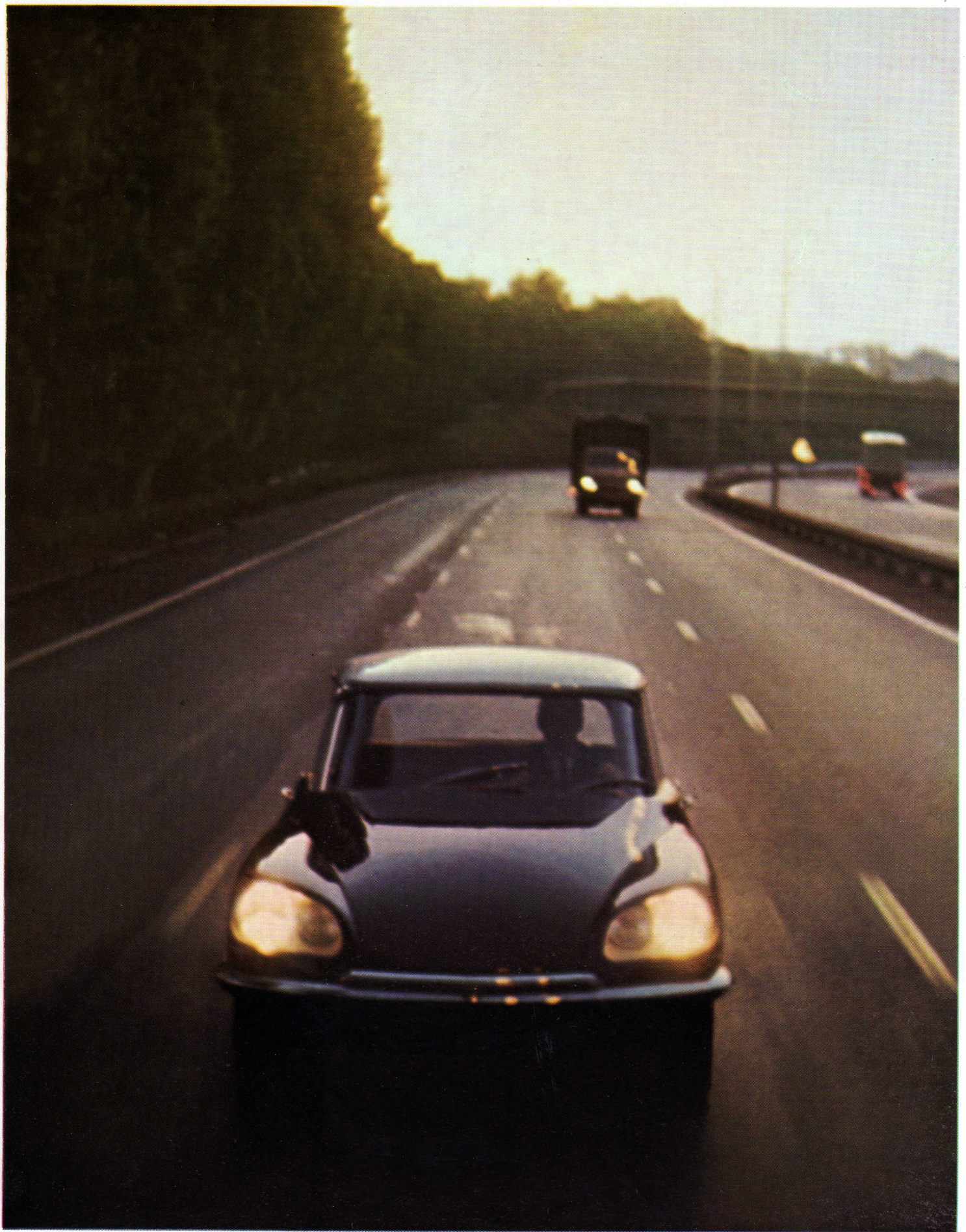
The body comprises detachable panels mounted to a combined chassis platform and space frame of immense strength, the whole unit being designed to have accident shock absorption zones both in front of and behind the driver/passenger compartment. At the front, behind the streamlined headlight fairings, there is a unique fourheadlamp system. The engines are all four-cylinders in line, 5 bearing, square or over-square, with cross-flow cylinder heads.

They have now been improved for the whole range: more response, more flexibility, more power. From 91 b.h.p. SAE for the ID 19 to 117 b.h.p. SAE for the DS 21. Further improvements are included in interior safety design (protective padding, dashboard fittings and controls operated by collapsible or rocker switches) and in vehicle comfort higher-backed wrap-round seats with infinite rake adjustment, ball bearing seat slides, new interior lighting, increased sound-proofing, electric screen washers, thermostatically controlled heating, electrically heated rear window which is either standard or optional on all Saloon models.

In the following pages you will find detailed information about all the models in the "D" series.

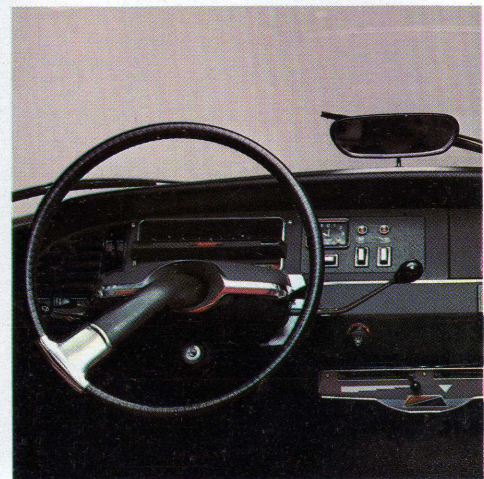
Try one, try them all. If you like them — and if they like you — then look no further. You will find the range so complete that there will certainly be a model tailored to your needs. You are about to become one of the family.

Speed is an abstract expression ; yet there is nothing less abstract than a car which can travel fast. There is no machine more human. Every car has its own characteristics, qualities and faults, a way of showing its age. Motor cars even have their own social classes, dynasties and noble families. The Citroens in the "D" series comprise one of these great families. Since the birth of the DS 19, its branches have continued to spread. Improved and diversified every year, each model in the "D" series, from the ID 19 to the DS 21 Pallas, has its own distinct personality,



Fifty years ago the first Citroen was introduced.

It was the 1st mass-produced European car offering electric starting & lighting, 5 demountable wheels with Michelin tires, and many other features found only on costly custom built cars of that time. Citroen always ahead, in the forefront of styling, safety, comfort & value for your dollar, now offers you the CITROEN PAR EXCELLENCE, the 50 th Anniversary, Citroen. Elegance, Grace, Beauty - combine with Safety, Comfort & Roadability. It all adds up to Citroen, the car that is 20 years ahead !



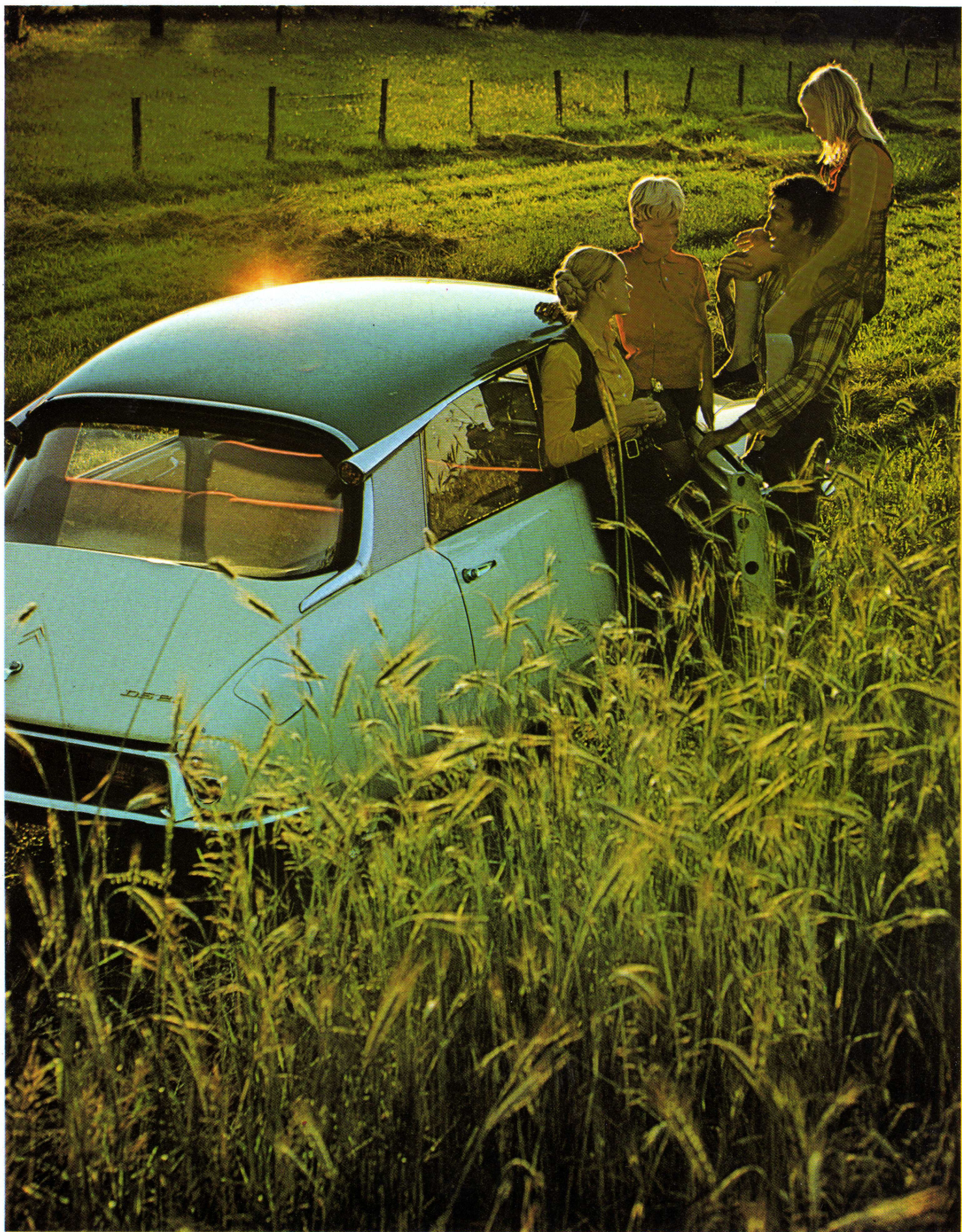


ID 19

The least expensive of these great road cars, with an engine of 1,985 cc developing 91 b.h.p. SAE at 5,750 r.p.m. The ID 19 will carry 5 people in legendary comfort at 100 m.p.h., can return a fuel consumption of 28 m.p.g. and, because of its moderate compression ration of 8:1, will run on regular fuel. Originally, it was designed as a simplified version of the DS but, gradually, its equipment has been brought into line with that of its forbear (optional power steering for example), the main differences are : simpler dashboard layout, manual gearchange, silver chevrons on the boot. The ID 19 has the following equipment as standard : Dual or Single tone colors, DS wheel trims, front door armrests, reclining seats, foam-backed carpeting, new luxurious Targa trim. Electrically heated rear window and other items are optional.

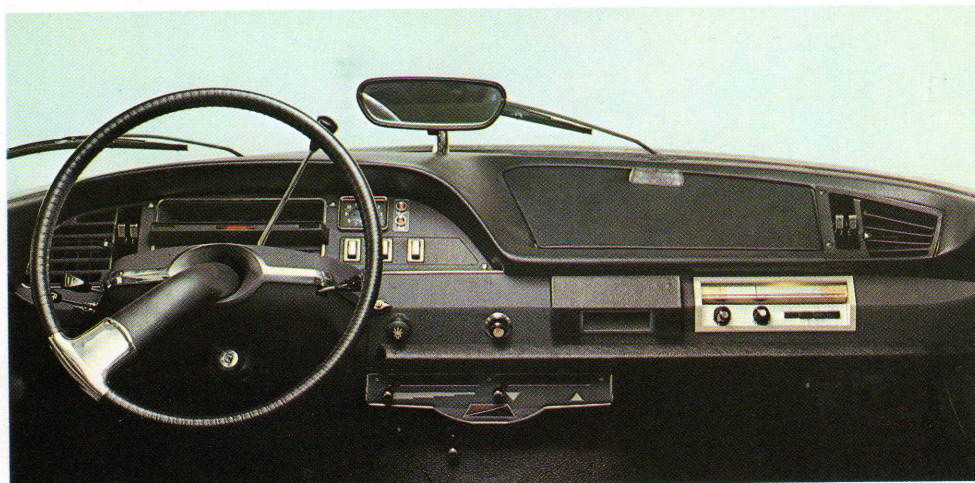


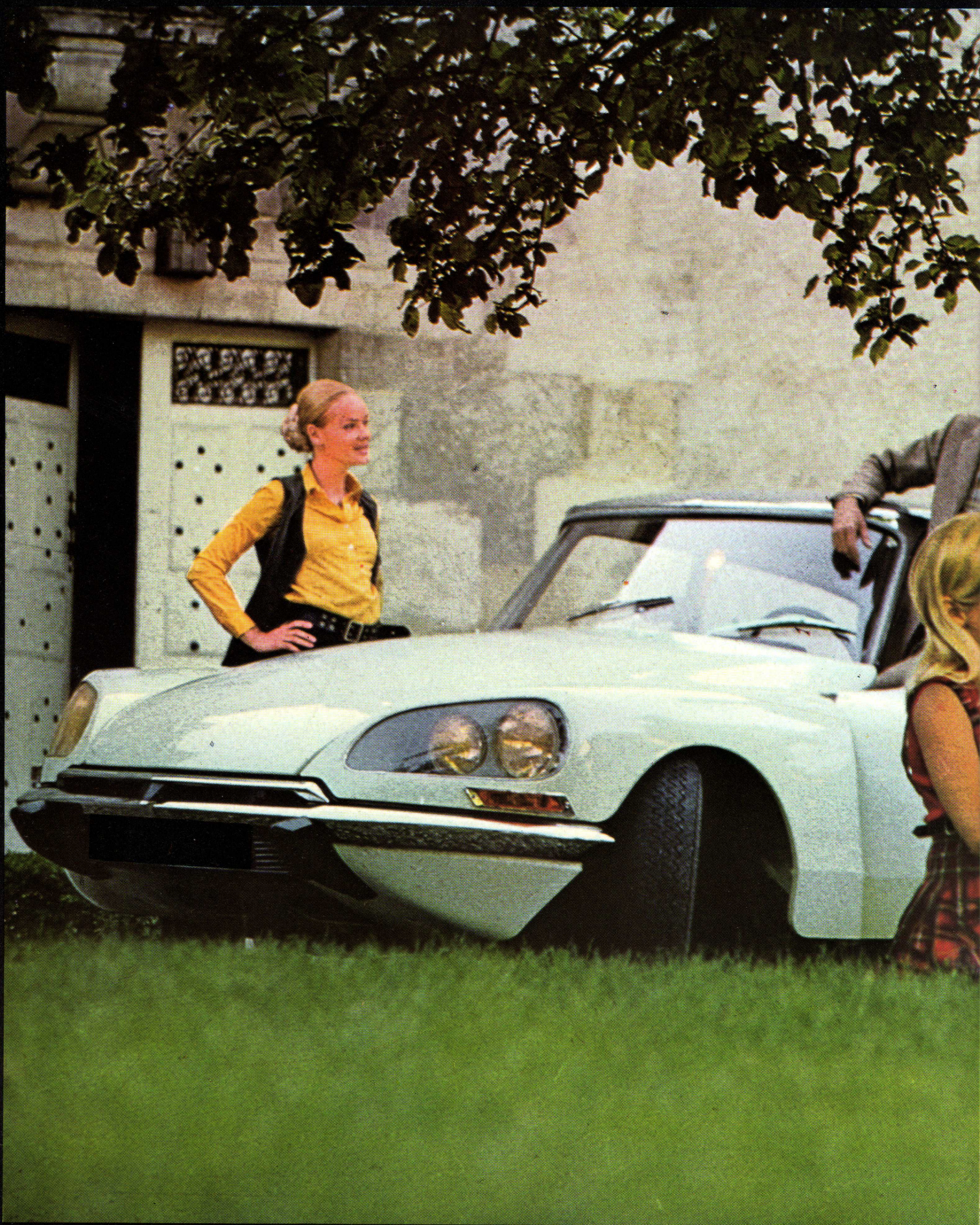




DS 21

Although descended from the DS 19, time has developed, improved and now perfected this celebrated model. The latest addition to its specification is the high performance version of the 2,175 cc engine developing 117 b.h.p. SAE at 5,750 r.p.m. With Power Steering standard, and Citromatic Drive (manual gearchange optional), the DS 21 is virtually driven with "a finger and an eye". Only two pedals and a flick of the finger to change gear. Impeccable driver comfort, legendary passenger comfort; soft, contoured seats re-designed for 1969, luxury equipment and effective sound-proofing at all speeds, all add up to the most restful ride you can find. The DS 21 combines the virtues of a fast road car with those of a real family sedan. Electrically heated rear window, radio, air conditioning, tinted glass, etc. are optional.





DS 21



Since the introduction of the DS almost 15 years ago, the world has taken this car to its heart. The combination of safety, comfort, roadability and silence has been a Citroen trademark since the first DS, and now - for our 50th year - the DS is even greater.

The new "over-square" engine now gives even greater torque and acceleration - combined with a blazing top speed of 115 mph.

The DS, like the ID, the Pallas, & D-wagons conforms with all Federal requirements.

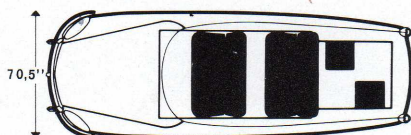
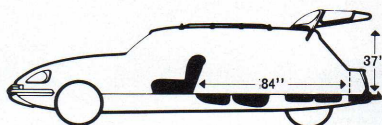
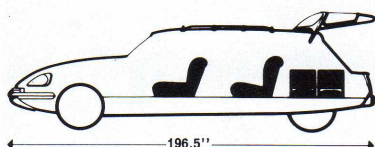
DS 21 PALLAS



Here is the ultimate in luxury and finish, a car for the discerning man, for the enlightened connoisseur who will only accept the best in everything. The distinctive PALLAS fittings and finish, both inside and out, have been designed to exacting requirements and only the best materials have been used: polished anodised aluminium and stainless steel, optional electrically heated rear window, thick foam-backed pile carpeting, deep, soft protection pads and superb Jersey Nylon trim (optional leather), complete the drawing room atmosphere. So sumptuous, that you may find it difficult to persuade your passengers, or yourself, to leave the car at the end of your journey. Anyway, the time you save will allow you time to sit back and reflect upon the wisdom of your choice. Here, is the ultimate in safety and comfort and speed: the Citroën PALLAS!



STATION WAGON 21



Offering the comfort and elegance of the DS, and the speed and economy of the ID, these station wagons are incredibly roomy (full 7-8 seaters). They have been specifically designed to be incomparable load carriers, as well as de luxe leisure vehicles for the family. All three models are the same mechanically, except that the DS-21 Comfort Wagon offers the option of Citromatic Drive. The Comfort models offer a more luxurious interior with thick carpets, arm-rests, reclining bed seats & a choice of Jersey or de luxe vinyl interiors. The Luxe model is without these features, and fitted with a plainer vinyl interior.



