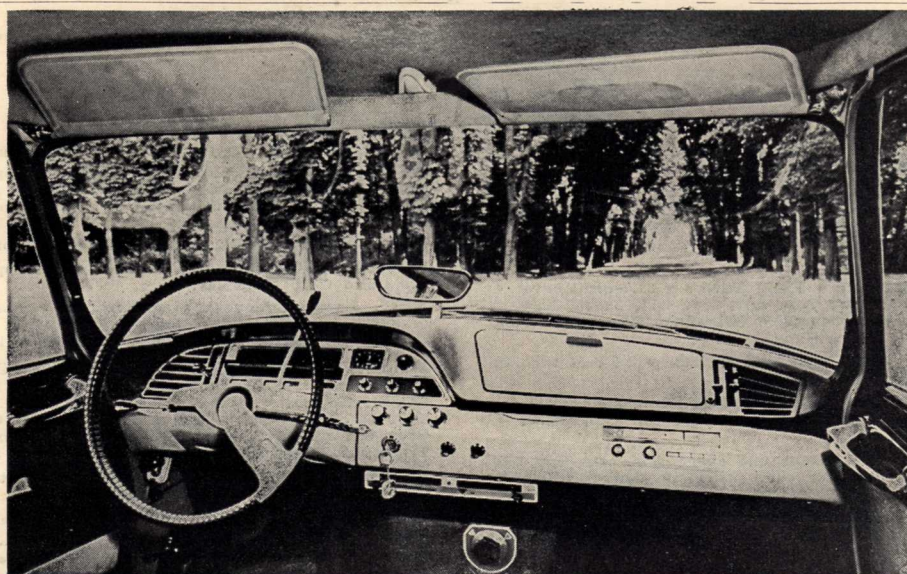
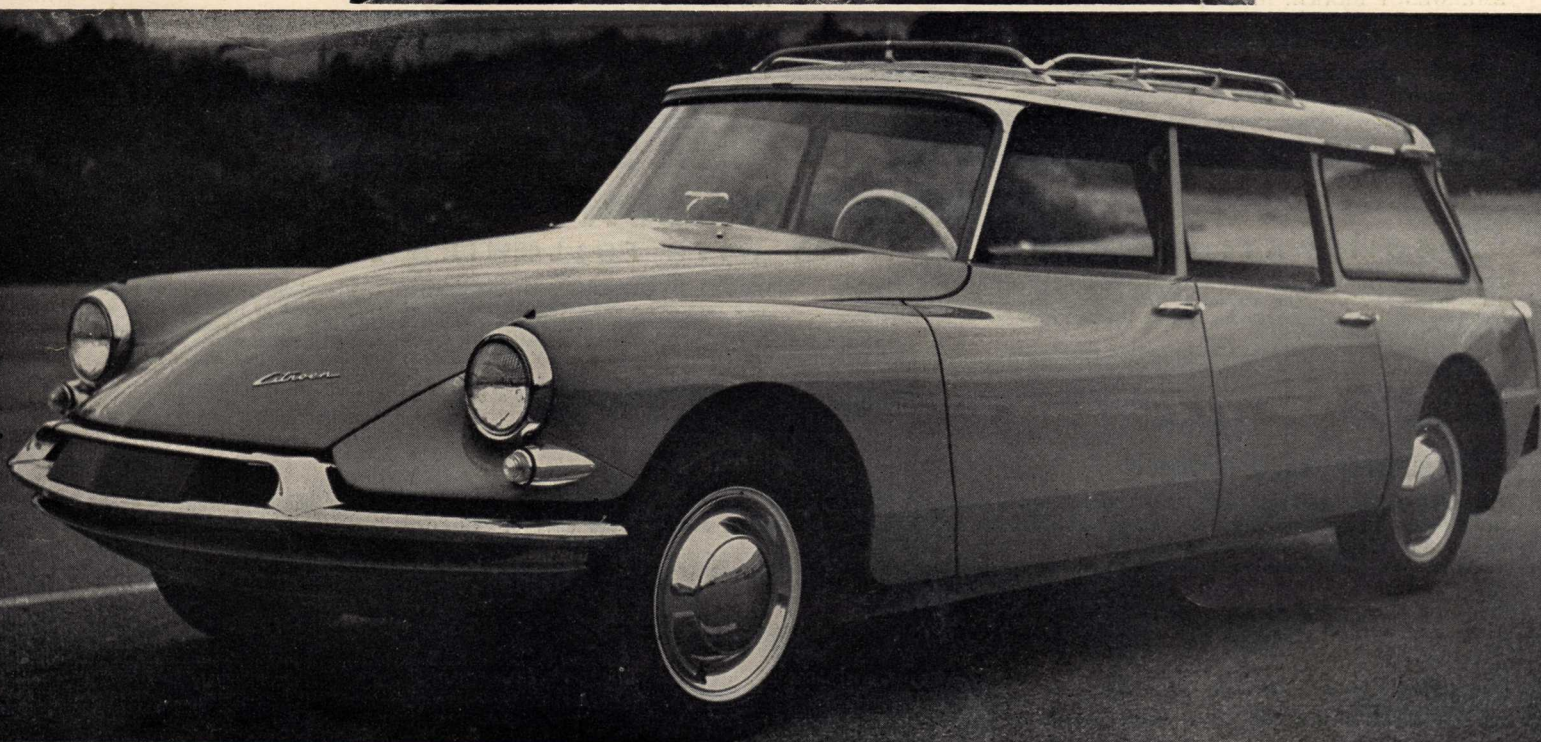




▲ CITROËN DS 19, ID 19 ▲



◀ INSTRUMENT PANEL
DS 19 SUPER-83



▲ CITROËN 4-DOOR 8 PASSENGER STATION WAGON ▲

See the new Citroën at:

DS 19

ENGINE. 4 Cyl. OHV 60° • Bore: 78 mm. or 3.07 ins., Stroke 100 mm. or 3.94 ins. • Total displacement 1,911 cc or 116.6 cu. ins. • 85 bhp at 4,500 rpm • 105 ft. lbs. torque at 3,500 rpm • Compression ratio: 8.5/1 • Pressure lubricated by mechanical pump • Carburetor: Weber double barrel 24/32 DDC • Mechanical gas pump • 12 Volt electrical system • Generator with regulator • Water cooling system with pump and thermostat • Cast aluminum cylinder head cover • Nylon fan.

CLUTCH. Single plate, dry type, automatic hydraulic control with centrifugal regulator.

TRANSMISSION. Front Wheel Drive • Final drive 8 x 31, spiral bevel • 4 speeds and reverse. Gear ratios: Top: 3.30, 3rd: 4.78, 2nd: 7.35, 1st: 13.8 • 2nd, 3rd, 4th fully synchromesh, automatically activated • Selector lever mounted on dashboard.

STEERING. POWER STEERING, rack-and-pinion type • 3 turns lock to lock — 36 feet turning circle • "No spoke" steering wheel.

FRONT SUSPENSION. Independent wheels • Two suspension arms and one air-oil unit with shock absorber for each wheel • Anti-roll bar • Levelling device.

REAR SUSPENSION. Independent wheels • One suspension arm and one air-oil unit with shock absorber for each wheel • Anti-roll bar • Levelling device.

STANDARD EQUIPMENT

Air-Oil Suspension with self level ride • Power steering • Power Disc brakes • Citromatic drive • Power jacking system • Heater and defrosters* • Clock • Turn signals • Reclining bed seats • Stainless steel wheel covers • Stainless steel trim • Windshield washers • Trunk light and courtesy light • Dimming rear-view mirror • Padded foam rubber carpeting • Michelin "X" safety tires • Folding center arm rest • Mileage and trip odometers • Dual horns, etc.

*Optional — Heavy Duty Heater with Rear Window Defroster.

ID 19

ENGINE. 4 Cyl. OHV 60° • Bore: 78 mm. or 3.07 ins., Stroke 100 mm. or 3.94 ins. • Total displacement 1,911 cc or 116.6 cu. ins. • Compression ratio 7.5 to 1 • 70 bhp at 4,500 rpm • Pressure lubrication by mechanical pump • Solex 34 carburetor • Mechanical gas pump • 12 Volt electric system with electric starter • Generator with regulator • Cooling system, pump and thermostat • Nylon fan.

CLUTCH. Single plate, dry type.

TRANSMISSION. Front Wheel Drive • Final drive 8 x 31, spiral bevel • 4 speeds and reverse • Gear ratios: Top: 3.30, 3rd: 4.78, 2nd: 7.35, 1st: 13.8 • 2nd, 3rd, 4th fully synchromesh • Gearshift lever on steering column.

STEERING. Rack and pinion • 4½ turn lock to lock • 36 feet turning circle • "No spoke" steering wheel.

FRONT SUSPENSION. Independent wheels • Two suspension arms for each wheel • One air-oil unit with shock absorber for each wheel • Anti-roll bar • Levelling device.

REAR SUSPENSION. Independent wheels, one suspension arm and one air-oil unit with shock absorber for each wheel • Anti-roll bar • Levelling device.

BRAKES. MAIN BRAKING SYSTEM: Disc brakes on the front wheels, drum brakes on the rear wheels • Wear of front linings automatically compensated.

EMERGENCY BRAKE: Hand operated on front discs.

STANDARD EQUIPMENT

Air-Oil Suspension with self level ride • Power jacking system • Heater and defrosters* • Clock • Turn signals • Reclining bed seats** • Stainless steel wheel covers • Stainless steel trim • Windshield washers • Trunk light and courtesy light • Padded foam rubber carpeting • Michelin "X" safety tires • Folding center arm rest.

*Optional — Heavy Duty Heater with Rear Window Defroster — ID 19 Comfort only. **"Comfort" and "Luxe" models only.

STATION WAGON

SPECIFICATIONS SAME AS ID-19 WITH FOLLOWING EXCEPTIONS:

BRAKES. POWER BRAKING SYSTEM: Disc brakes on the front wheels, drum brakes on the rear wheels • Brake pressure distributed between front and rear wheels according to axle loading • Wear of front linings automatically compensated.

EMERGENCY BRAKE: Hand operated on front discs.

BODY. 6/8 seater, 4 door, with full opening tailgate • Monoshell construction • Platform with side members of welded sheet steel, flat floor, no drive shaft tunnel. Full length aerodynamic underpan. All around safety glass AS1 and AS2. Total visibility.

STANDARD EQUIPMENT

An aluminum luggage rack is standard equipment on "Luxe" and "Comfort" models, as are Power Disc Brakes, heater and defroster, clock, Michelin "X" tires, windshield washers, and stainless steel wheel covers. "Comfort" model has reclining bed seats and folding center arm-rest.

BRAKES. POWER BRAKING SYSTEM: Disc brakes on the front wheels, drum brakes on the rear wheels • Brake pressure distributed between front and rear wheels according to axle loading • Wear of front linings automatically compensated.

EMERGENCY BRAKE: Foot-operated on front discs.

WHEELS AND TIRES. Center lock nut wheels equipped with Michelin "X" Steel and Cord 165 x 400.

BODY. 5 seater, monoshell construction • Platform with side members of welded sheet steel, flat floor, no drive shaft tunnel. Full length aerodynamic underpan. Total visibility. All around safety glass AS1 and AS2.

WEIGHT, DIMENSIONS AND CAPACITIES. Curb weight 2640 lbs. • Wheel Base: 123 ins. • Track: front 59 ins. Rear 51¼ ins. • Overall length: 189 ins. • Overall width 70¼ ins. Overall height: 58 ins. • Turning circle: 36 ft. • Gas tank: 17 gallons • Crank case 8.5 pints • Water Capacity 2½ gal. • Gear Box and differential 5.3 pints. Trunk: 17.5 cubic feet • Spare wheel housed under the hood.

HEATING AND VENTILATION. Heating for front and rear passengers and screen defrosting by independent radiators and electric fan • Air-diffusers at both ends of the dashboard.

PERFORMANCE. Top speed over 95 mph • Mileage: up to 32 mpg.

POWER LIFT. Automatic Jacking. Adjustable road clearance. Lowest Position: 4.2 ins. • Normal Driving Position: 6.4 ins. • High Position: 11.2 ins.

NOTE: BRAKES. ID 19 "Comfort" model only:

BRAKES. POWER BRAKING SYSTEM: Disc brakes on the front wheels, drum brakes on the rear wheels • Brake pressure distributed between front and rear wheels according to axle loading • Wear of front linings automatically compensated.

EMERGENCY BRAKE: Hand operated on front discs.

WHEELS AND TIRES. Center lock nut wheels equipped with Michelin "X" Steel and Cord 165 x 400.

BODY. 5 seater, monoshell construction • Platform with side members of welded sheet steel, flat floor, no drive shaft tunnel. Full length aerodynamic underpan. All around safety glass AS1 and AS2. Total visibility.

WEIGHT, DIMENSIONS AND CAPACITIES. Curb weight 2620 lbs. • Wheel Base: 123 ins. • Track: front 59 ins. Rear: 51¼ ins. • Overall length: 189 ins. • Overall width: 70¼ ins. Overall height: 58 ins. • Turning circle: 36 ft. • Gas tank: 17 gallons • Crank case 8.5 pints • Gear box and differential 5.3 pints • Water capacity 2½ gallons • Trunk: 17.5 cubic feet • Spare wheel housed under the hood.

HEATING AND VENTILATION. Heating for front and rear passengers, Air-diffusers at both ends of the dashboard.

PERFORMANCE. Top speed over 90 mph • Mileage: up to 35 mpg.

POWER LIFT. Automatic Jacking. Adjustable road clearance. Lowest Position: 4.2 ins. • Normal Driving Position: 6.4 ins. • High Position: 11.2 ins.

WEIGHT, DIMENSIONS AND CAPACITIES. Curb weight 2800 lbs. • Payload 1540 lbs. • Wheel Base: 123 ins. • Track: front 59 ins., Rear: 51¼ ins. • Overall length: 196" • Overall width: 70¼ ins., Overall height: 59 ins. • Gas tank: 17 gallons • Crank case 8.5 pints • Gearbox and differential 5.3 pints • Water capacity 2½ gallons • Spare wheel housed under the hood.

ECONOMY. Over 30 MPG at a steady 50 MPH.

You'll ride on air for the rest of your life...

The fun of the trip is in the ride...with a CITROEN! To beach or supermarket...to city or country club... wherever you travel, a new world of motoring pleasure awaits you and your family. Here is the cloud-soft comfort of AIR-OIL SUSPENSION, with the exclusive POWER-LIFT that lets you adjust the riding level of the car to suit the road. Here is the personal control of the sports car...the tenacious roadability of FRONT-WHEEL DRIVE. In a CITROEN, the functional car with advanced engineering, you will always enjoy the safe, economical, restful motoring. Wherever you are driving in pursuit of happiness, take a CITROEN...it is your assurance of extra-enjoyment on the road!